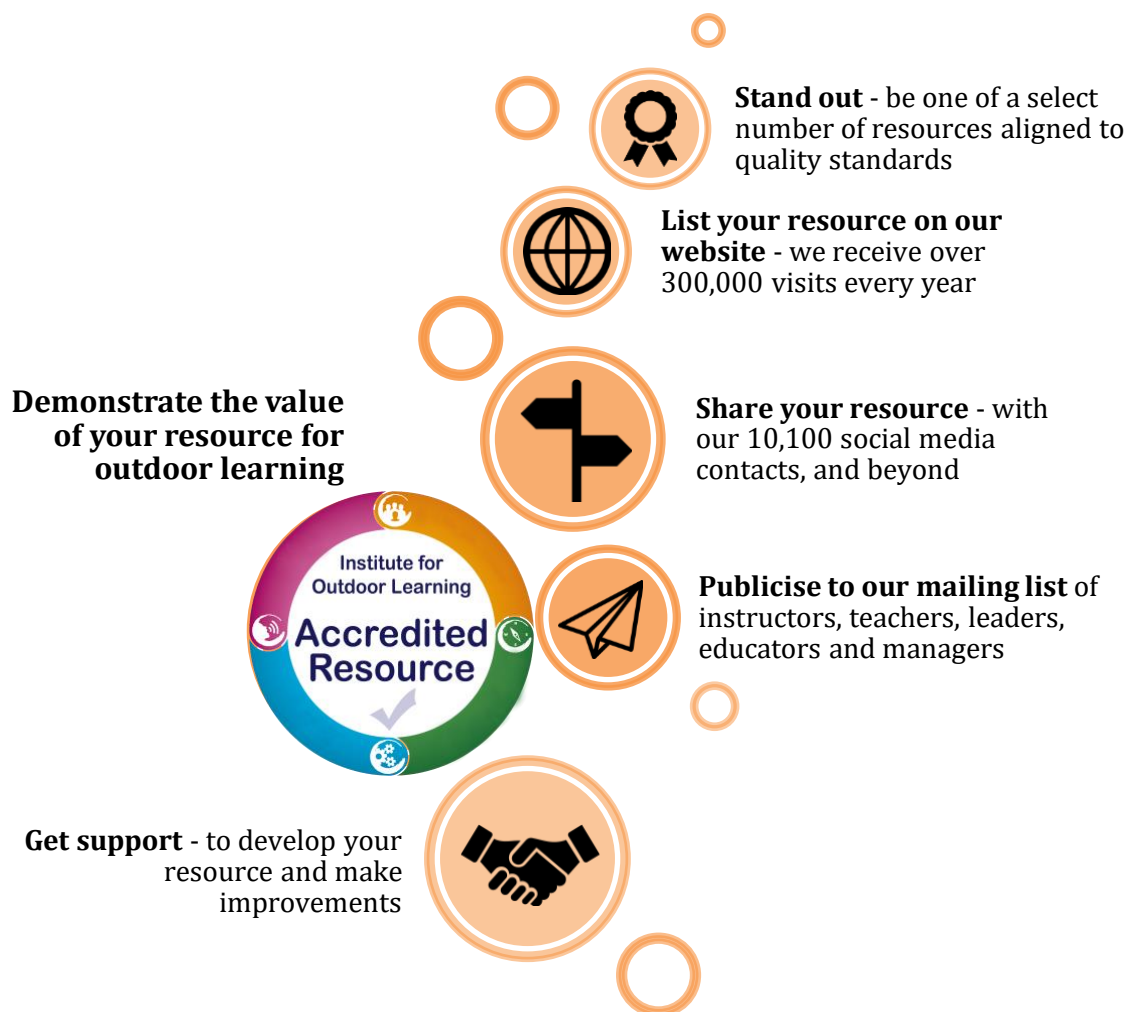




Institute for **Outdoor Learning**

IOL Resource Accreditation

A quality mark for resources that can support effective outdoor learning



Warwick Mill Business Centre, Warwick Bridge, Carlisle, Cumbria, CA4 8RR

www.outdoor-learning.org institute@outdoor-learning.org

T 01228 564580 F 01228 564581

Registered charity number 1149420

IOL Resource Accreditation

A quality mark for resources that can support effective outdoor learning

Resource accreditation with the Institute for Outdoor Learning assists instructors, teachers, leaders, managers and the general public in identifying quality resources that are relevant to outdoor learning.

IOL Resource Accreditation can help you to build your reputation and be known as a leading provider by using the IOL Accredited Resource Badge on products, promotional material and web listings. Accreditation helps you extend your client base by being promoted to our community of several thousand members. You can get ahead of competitors and establish your place in the market by attracting professionals and organisations that need to purchase delivery and continuing professional development (CPD) resources.

Core Benefits:

- **Demonstrate the value of your resource for outdoor learning**
- **Publicise to our mailing list** of instructors, teachers, leaders, educators and managers
- **Share your resource** - with our 10,100 social media contacts, and beyond
- **Stand out** - be one of a select number of resources aligned to quality standards and able to display the IOL Accredited Resource mark
- **List your resource on our website** - we receive over 300,000 visits every year
- **Get support** - to develop your resource and make improvements

Options:

Resource accreditation is open to all organisation members of IOL

We welcome applications for all types of resource that include an instruction guide, booklet or scheme of work with suggestions for use in outdoor learning.

IOL is not seeking to accredit published books. We will accredit schemes, products, guides, workbooks and other resources relevant to outdoor learning professionals.

Resource accreditation helps IOL to support high-quality outdoor learning. It can be in addition to, or independent of, other accreditations.

What Do We Assess?



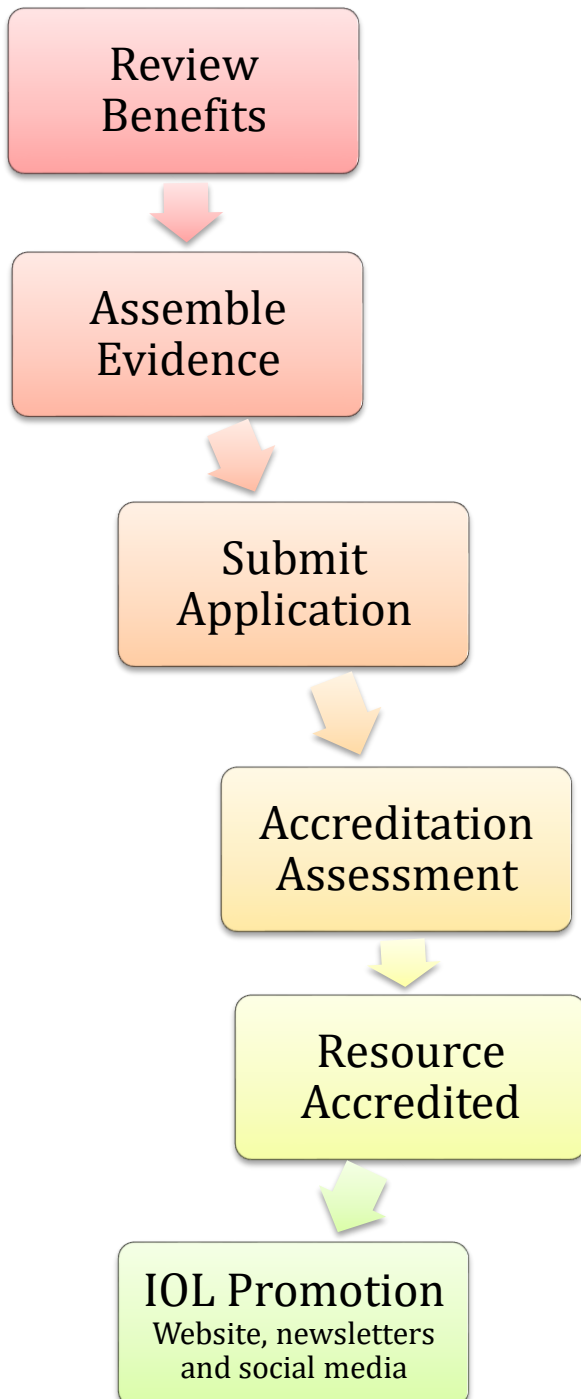
The full Resource Accreditation Quality Criteria are available in a separate document and covered in the application form.

To Apply for Resource Accreditation

The IOL Resource Accreditation was launched March 2019. We are welcoming applications whilst we are in a PILOT PHASE of the process. We will give you plenty of support and guidance to complete your application as you help us evaluate and refine our systems and processes.

To begin the process **download an information pack from the IOL website** or contact the IOL central office louise@outdoor-learning.org.

Pathway to Resource Accreditation



Consider

1. Read through the guidance and decide if IOL accreditation is appropriate for your resource.

If you require further support just ask.

IOL consultancy can be provided if you need help in design or application to outdoor learning.

Prepare

2. Download the application form and guidance notes from the IOL website.
3. Assemble all the evidence required and complete your application form.

Submit

4. Submit your full application and pay the required fee.

Assessment

5. Your application will be checked for completeness and considered by an IOL Accreditation Board.

The desk-based assessment covers all the criteria in detail.

6. For successful applications, receive your IOL Accredited Resource Badge.

If your application is deferred, gather more evidence and re-apply.

Renew

7. Renew accreditation annually / 5 yearly.

How much paperwork is there to complete?

The process is designed to check information that most providers committed to high delivering quality learning experiences will have already considered.

Wherever possible we strongly encourage applying organisations to use evidence of accreditation with other bodies in their application. The aim is not to introduce unnecessary paperwork but to ensure an external, professionally based, quality assurance process.

How are applications assessed?

Each application will first be checked for completeness and detail. Any missing information and the application will be returned to resubmit with the full information.

Once we have received a completed application it will be reviewed by at least two members from the following list:

- IOL Operations Manager
- IOL Regional Professional Development Co-ordinator
- IOL Professional Standards Manager

In addition, further specialist guidance will be sought where necessary to assess all areas of the application.

Guidance can come from one or more of:

- **Chair of relevant IOL Professional Practice Group or equivalent expert** to provide specialist advice or knowledge.
- **Employer or employers** who can comment on the suitability and need for the resource from their perspective.
- Prospective users of the resource to comment on the need, style and usability.
- **Partner organisations** that work closely with and support IOL Accreditation (e.g. AHOEC or BAPA).
- **IOL Chief Executive or Trustee** to ensure the charitable aims and objectives of IOL are upheld by accrediting a resource in a particular area or field.

Each accreditation application is different and IOL will draw together an accreditation board that brings the appropriate specialisms to assess each application fairly.

What is the renewal process?

The renewal process is to complete and submit your renewal form. You will be required to provide IOL with information that includes:

- Changes to content, design, processes or systems
- Summary of user feedback received

Your accreditation will be renewed as long as it meets all the current criteria. In line with an IOL commitment to reflective practice it is expected that minor updates will occur, these will not usually require re-accreditation.

If there significant changes in your application at renewal you will be charged an amendment fee or, for larger changes, the full accreditation fee.

Can accreditation be withdrawn?

IOL retains the right to withdraw accreditation at any time, including the reasons:

- Failure to comply with the current accreditation criteria
- Failure to comply with the policies and processes submitted at accreditation
- Misuse of any branding, wording or logos of the Institute for Outdoor Learning

Complaints

If you have any questions or queries about the process or your specific application please contact the IOL central office in the first instance. We will do our best to ensure that IOL Accreditation is right for you at this time and support you to complete your application in order to meet the criteria.

If you feel your application has been unfairly assessed, please contact the Professional Standards Manager who will look into the matter. Should this cause a conflict of interests then the IOL Chief Executive will look into your concerns and respond.

To Apply for Resource Accreditation

Organisational members of IOL can apply for resource accreditation regardless of whether they are a charity, sole trader, business or educational institution.



To begin the process **download an information pack from the IOL website** or contact the IOL central office louise@outdoor-learning.org.