



Join our Team



Outdoor Learning Instructor – fixed term

Engagement

You will join our Engagement team, supporting the delivery of a wide range of outdoor learning activities to a diverse audience of schools and groups.

Location

This role is based at Ham Farm House, and our learning spaces at The Den, the Sett, Lynch Farm and Nene Outdoors all within Ferry Meadows Country Park, Ham Lane, Peterborough, PE2 5UU

Working Hours

This is a full time, fixed term position for 12 months, initially covering maternity leave but with the potential to extend, working an average of 37.5 hours a week. The successful candidate will need to have the flexibility to work 5 in any 7 days as set out in the engagement team rota.

Salary

£25,061 - £27,418 per annum, subject to experience. Our salaries are externally benchmarked.

Hello from the CEO

Thank you for the interest you have shown in the post of Outdoor Learning Instructor at Nene Park Trust.

This is an exciting opportunity to join the Engagement team. As part of your role, you will support the delivery of a wide range of outdoor learning activities to a diverse audience of school and groups, sharing the love of nature and the uniqueness of our Park with children and young people and families from the city and further afield.

Nene Park Trust is the registered charity which looks after Nene Park in its entirety. Established in 1988 to ensure that the Park would be managed and protected forever, the Trust looks after all maintenance, coordination of the Park's activity programme and administration of commercial properties in the Park.

Our impressive vision

We envision Nene Park as the crown jewel of the region, a sanctuary for heritage, culture and wildlife, and a playground offering diverse recreational activities for all the people of Peterborough and beyond.

In collaboration with our partners and the vibrant communities of Peterborough, we have crafted an ambitious and progressive Nene Park 'Master Plan'.

This visionary blueprint, which takes us well beyond our historic boundaries, tackles a spectrum of challenges and opportunities, guiding our journey towards a vibrant future. Please dive into the details of our exciting plans at

www.nenepark.org.uk/strategy-and-policies.

Our inclusive recruitment promise

Each individual that is employed by the Trust brings their own perspective through their unique life and work experience that may go beyond the details included in our job descriptions and recruitment packs.

That's why we value and welcome applications from diverse groups in terms of race, religion, gender, sexual orientation, age or disability.

If this role, and the work that we deliver, excites you, and if you think you would be a great fit, then we would love to hear from you!

Our recruitment process is designed to be inclusive.

As such, we have adopted a range of inclusive working practices including anonymised application scoring and ensuring we have diverse interview panels.

We understand that there are many barriers when it comes to applying for jobs and if you feel there is anything preventing you from applying for this one, whether that be disability, money, internet access, childcare arrangements or anything else, please get in touch so we can support you through the application process.

In this pack you will find more information about this position and how to apply if you're interested.

I wish you success with your application.

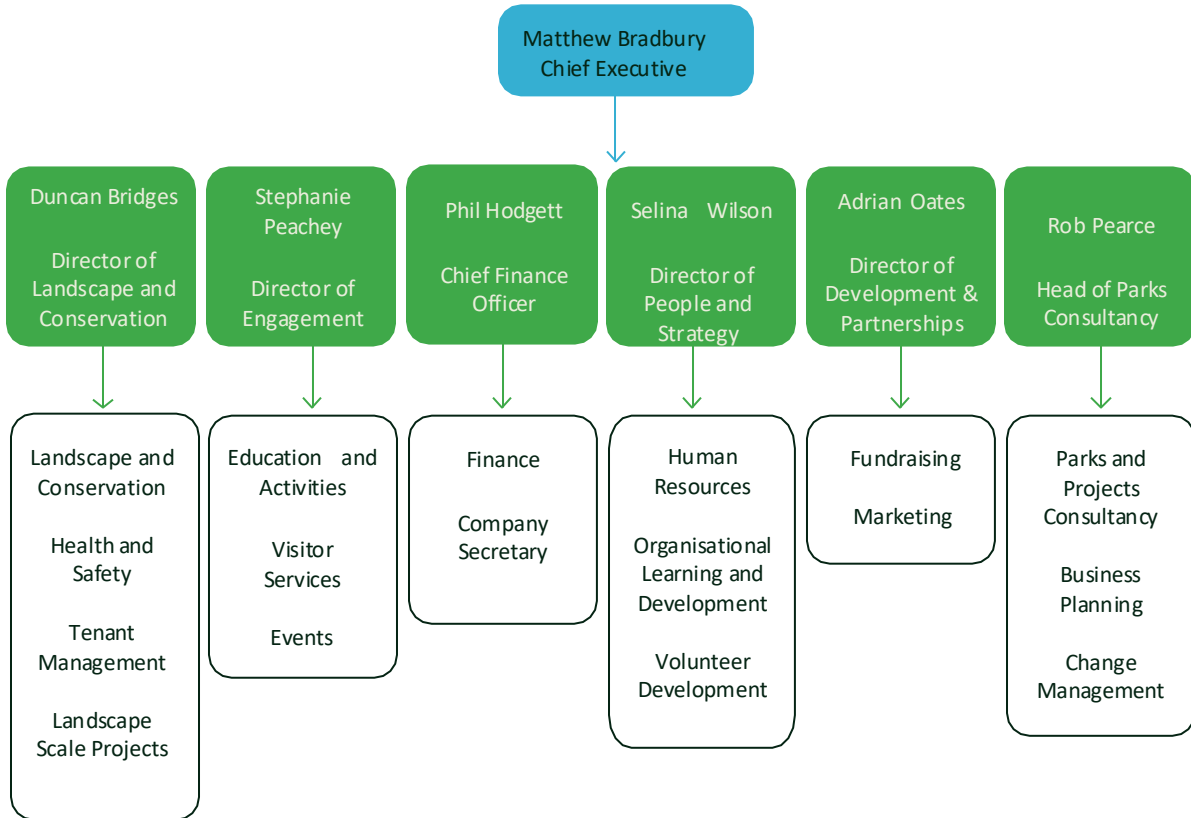


Yours faithfully,

A handwritten signature in black ink, appearing to read 'Matthew Bradbury', written over a white background.

Matthew Bradbury
Chief Executive
Nene Park Trust

Leadership Team



The Role

Outdoor Learning Instructor

This post is an exciting opportunity for an enthusiastic and committed individual to join the team that provides outdoor learning activities at Nene Park Trust. We are looking for someone with a passion for the outdoors to deliver learning experiences that both inspire children and young people to become future stewards for the environment and directly deliver the curriculum for schools.

You will work as part of our busy Engagement Team, delivering a programme of learning and skills-based activities across early years to Key Stage 3 and above. You will lead nature-based crafts, encourage children to play confidently in the outdoors, embrace forest school and its ethos, and deliver curriculum-linked sessions and adventurous activities as part of our growing calendar of school visits.

Your experience

Leading learning for children and young people

You will have considerable experience of working with children and young people of all ages and abilities, and delivering learning activities in a natural environment.

Strong communication skills

You'll be an engaging communicator, whether that's agreeing the content of a session with a teacher, describing the contents of a pond dipping net to a family, or getting creative with a 2 year old.

Collaborative and adaptable

You'll enjoy working across teams, and will be at ease with quickly adapting to changing requirements and priorities, efficiently and proactively.

Further information

We are committed to safeguarding and promoting the welfare of our visitors so applicants must be willing to provide employers and undergo a Disclosure and Barring Service check. Although this role is fixed term, there is the ambition for it to become permanent, with the right funding in place.



Job Description

Reporting to: Senior Instructor – Land

General purpose

Working as part of our passionate Nene Park Trust Engagement Team, you will play a key part in the delivery of a busy programme of outdoor learning activities to visiting school groups. Your main responsibilities will be in the delivery of curriculum based outdoor learning to Key Stage 1 and 2, and field work opportunities for geography and biology at Key Stages 3 and above. You will also lead and assist on other outdoor activities including Nature Tots, Holiday Clubs and Forest School activities.

Key deliverables

- Support the Engagement team to deliver a programme of outdoor learning activities for schools and other education organisations and groups
- Produce plans for activities, identifying appropriate learning outcomes and liaising with accompanying staff to ensure programmes meet their requirements
- Contribute to the development of new outdoor learning activities, taking ownership of some areas and confidently sharing ideas with team members
- Create an engaging, enjoyable and safe learning environment, carrying out risk assessments and adapting activities where appropriate
- Identify individual learning needs and plan and adapt sessions to effectively respond to the needs of the group
- Cleaning and maintaining our learning spaces, and equipment as required
- Develop strong working relationships with colleagues, schools, and other partners
- Support the wider delivery of activities and operations as required, including community focussed activities and events, and activities at Nene Outdoors
- Be responsible for health and safety of yourself, colleagues and visitors. Implementing Safeguarding and Health and Safety policies as appropriate



Person Specification

Requirements – knowledge and experience:

- Proven experience of delivering education and learning activities in an outdoor environment
- Experience of delivery to a wide range of ages and abilities, from early years to Key Stage 5
- Experience of developing educational activities and resources to meet National Curriculum requirements
- Experience of carrying out risk assessments
- Good level of general knowledge of local wildlife identification and natural habitats

Requirements – skills and abilities:

Essential:

- Level 2 English and Maths or GCSE Grade 4/C
- Level 3 or higher in a relevant subject i.e. biology, geography, environmental science
- First Aid/First Aid at work – or willingness to undertake training
- Ability to communicate effectively and confidently with a diverse range of children, young people and adults
- Positive, enthusiastic, with a visitor focused approach
- Willingness to work outdoors in all weather conditions
- Ability to work independently, on your own initiative as well as work as part of a team

Desirable – holding a selection of the following qualifications would be useful in this role:

- Degree or equivalent in a relevant subject i.e. biology, geography, environmental science
- Level 3 or above qualification in outdoor learning i.e. Level 3 Certificate – Leading Forest School
- Other outdoor activity qualifications i.e. archery
- Interest in natural history and sustainable living

Other points:

- Flexibility to work 5 in any 7 days.



Why join us?

At Nene Park Trust, we recognise that the high level of service we deliver is dependent upon our excellent staff team and as such, we want to recognise employee's commitments to the Trust through an extensive rewards package.

Here are just a few of the things we offer:

Pension Scheme

The Trust provides a generous pension scheme for those eligible. Exceeding the Government's minimum requirements, we contribute 10% of employees' gross salaries directly into their pension pots. An employee's minimum contribution level is 3%, though employees may choose to contribute more.

Employee Discounts and Free Parking

All employees are entitled to free parking at our sites as well as employee discount at our cafes, restaurants and shops.

Learning and Development

With plenty of learning and development opportunities available throughout the year, the Trust is keen to provide all employees with the skills and learning they need to successfully deliver their roles and develop their careers at the Trust.

Health Care

The Trust provides access to its comprehensive health care plan with Westfield Health which includes a 24/7 doctors' advice line, cash back for a variety of services including optical and dental and numerous therapy treatments.

Life Insurance

The Trust provides life insurance cover of five times' annual salary in the event of death in service for employees who have completed 12 months.

Health and Wellbeing

The Trust has a number of appointed Health and Wellbeing Champions, all of which are Mental Health First Aid trained, and implement and deliver a wide range of initiatives to support employee health and wellbeing throughout the year.

INVESTORS IN PEOPLE® We invest in wellbeing Gold

Nene Park Trust are proud to have Investors in People (IIP) Gold Level accreditation. This means that as a result of our leadership and management practices and the way in which we support, empower and encourage learning amongst our employees, we can proudly say that we are part of the top 17% of organisations that have reached IIP Gold status!



How to apply

If you are interested in applying then please submit your application using the forms provided on our website: www.nenepark.org.uk/vacancies

Forms must be sent by **9am on Monday 11th May** to recruitment@neneparktrust.org.uk

The information you provide on your form will be used to support the scoring process and will determine if you are successful for interview.

If you require a printed copy of an application form please contact us using the details on the back page.

Shortlisted applicants will be contacted **by 5pm on 13th May** and interviews will be held **on 20th May** at Nene Park Trust Offices, Ham Farm House, Ham Lane, Peterborough, PE2 5UU.

An offer will be made to the successful candidate shortly after the interview date. Candidates should note that any offer of employment made by Nene Park Trust will be subject to satisfactory written references. You must also be able to demonstrate that you have the right to work in the UK and that you have the qualifications listed in your application.

Nene Park Trust is committed to the safeguarding and welfare of its employees, volunteers and visitors. Our safeguarding policy is issued to all new staff as part of our induction process and has been created to ensure that all individuals coming into contact with the Trust are safe and free from harm and therefore, where appropriate, we ask our employees complete a Disclosure and Barring Service (DBS) check. This position will require a DBS check, which you will be asked to complete upon acceptance of a job offer. Candidates should note that any offer of employment made by Nene Park Trust is subject to a satisfactory DBS check.

You are always advised not to resign from your present employment until any offer of employment has been confirmed.



Further Information

For an informal discussion about this role please contact our **Senior Instructor - Learning, Vicky Chambers** on **07391 029636**. If you require any further information about our recruitment processes, or would like to discuss your access needs, such as wheelchair access or hearing support, please state this in your application form, or email recruitment@neneparktrust.org.uk and we will do our best to support you.

We can't wait
to hear from
you!



Contact us

If you have any questions about this role, we'd love to hear from you. Please get in touch with our team.



Nene Park Trust
Ferry Meadows,
Ham Lane, Peterborough,
PE2 5UU



Follow us

recruitment@neneparktrust.org.uk

| 01733 234193

| nenepark.org.uk



**Nene
Park
Trust**